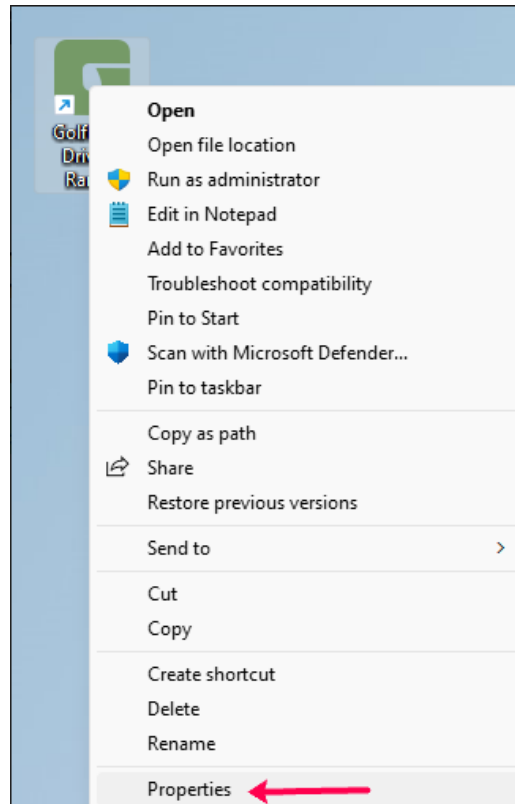
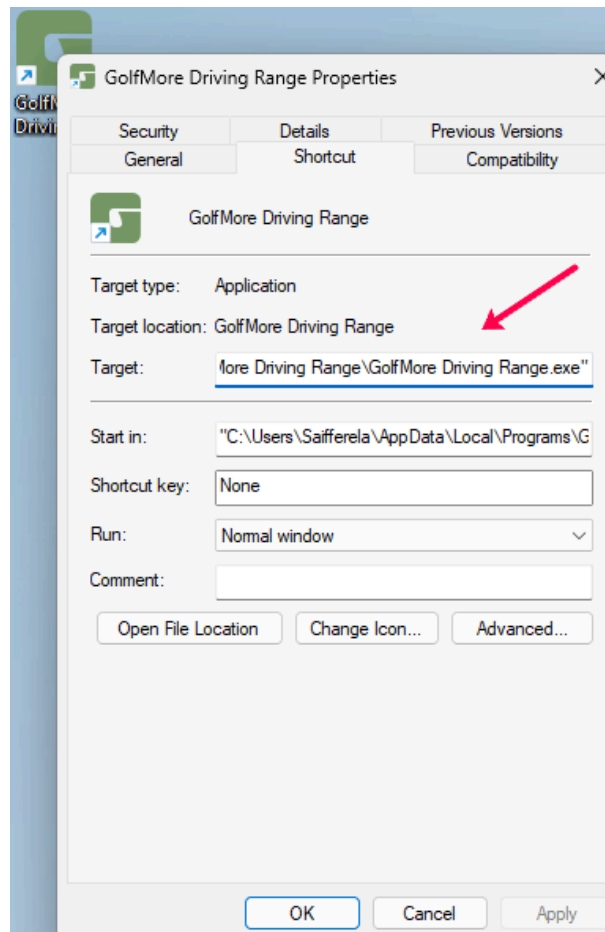


Update JRE for DrivingRange_Shop.exe

1. **Download the update-jre script.**
 - Download the update.jre.bat file here: [\[link\]](#)
2. **Find the current installation location**
 - Right-click on the **GolfMore Driving Range** icon.
 - Select **Properties** from the menu.



- In the **Properties** window, locate the field that shows the file's location.

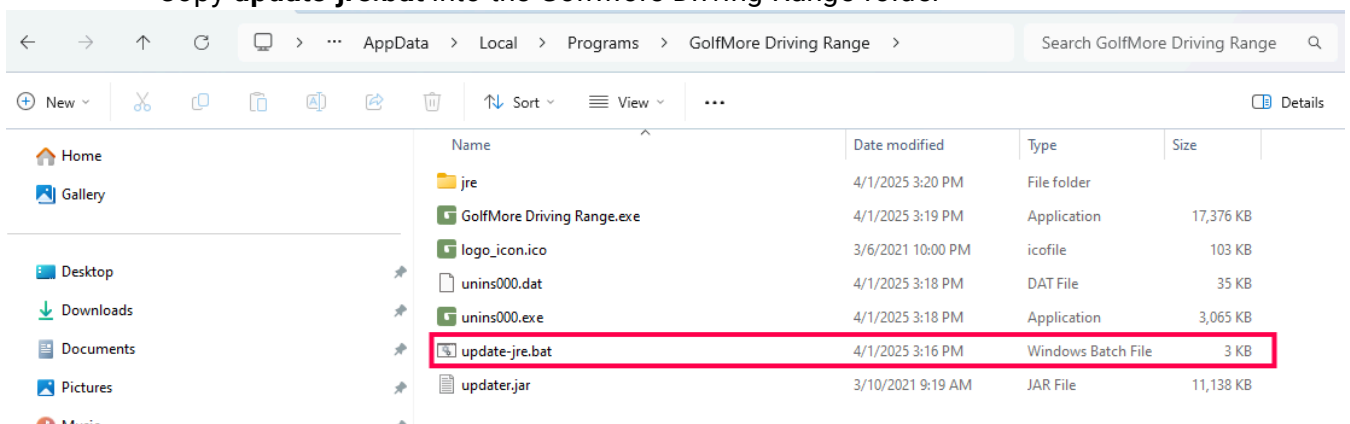


3. Default installation path

- Unless changed, the program is typically installed in: `C:\Users\{YourUserName}\AppData\Local\Programs\GolfMore Driving Range\GolfMore Driving Range.exe`

4. Move the update-jre.bat

- Do step 1
- Copy **update-jre.bat** into the GolfMore Driving Range folder



5. Run the updater

- Double-click **update-jre.bat** to start the update.
- A console window will open, showing download progress.

- Do not close the window manually.
- The process is complete when: the progress reaches 100%

```
C:\Windows\system32\cmd.e. X + v
SUCCESS: The process "javaw.exe" with PID 19988 has been terminated.
ERROR: The process "java.exe" not found.
Downloading JRE from "https://s3.eu-west-1.amazonaws.com/golfmore.dev/app-updates/dr-shop/java-update/jre-11.zip" to "C:\Temp\jre-11.zip"
% Total    % Received % Xferd  Average Speed   Time    Time     Time  Current
           Dload  Upload   Total     Spent    Left     Speed
13 65.1M  13 9188k   0     0  7895k      0  0:00:08  0:00:01  0:00:07 7900k
```

6. After the update

- The application will launch itself.
- You can use the program normally (e.g., via its desktop shortcut).

